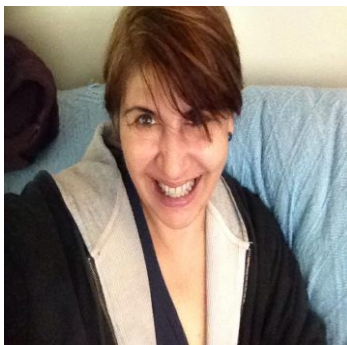


MARIE – THE MIDWIFE



Congratulations on your pregnancy!

Thank you for choosing Marie as your midwife. We work in partnership with you to provide you with a safe and effective service. Our aim is to emphasise an open communicative relationship of sharing information and create a plan designed by you for you.

This means that through your pregnancy you will see Marie at your antenatal checks, so by the end of your pregnancy you will have got to know me very well and I will be there for you during your labour and birth. I will continue the care for you and your new baby through the postnatal period until your discharge between 4 – 6 weeks.

We operate a 24 hour service and my caseload consists of between 6 – 8 women per month and we operate clinics at Otaika Road Monday to Thursday. We do not schedule routine appointments outside hours; however, if you need urgent midwifery advice and care, I am always available for you. If you need to change your clinic appointment, please let us know and we can reschedule your check for another time.

We regularly attend study days and this is important in ensuring our competence to meet requirements as a Midwife in New Zealand. A locum midwife will be available to back us up as these study days occur.

Your Code of Rights confers a number of rights on all consumers of health and disability services in New Zealand. Our obligation under the Code is to take “reasonable actions in the circumstances to give effect to the rights and comply with the duties” in the code.

You can find detailed information on your rights under the code here:

<http://www.hdc.org.nz/the-act--code/the-code-of-rights>

If you have any questions, please do not hesitate to ask, also if you have any suggestions to make that will help to improve our service, your comments will be appreciated.

Marie Chopin-McCarthy, RN, RM, PGDipHSc

027 4720077

0800 THE MIDWIFE